



PIPE SOLUTIONS

**KEEPING BUSINESS'S
MOVING & MAKING**

 www.fdg.nz.com
 sales@fdg.nz.com
 0800 555 464



QUICK LOCK CLAMP - ZINC PLATE		
RANGE	CODE	PACK QTY
12-14mm	HCPB12-14ZP	150
15-19mm	HCPB15-19ZP	150
21-23mm	HCPB21-23ZP	100
26-28mm	HCPB26-28ZP	100
32-35mm	HCPB32-35ZP	100
38-45mm	HCPB38-45ZP	50
48-56mm	HCPB48-56ZP	50
57-61mm	HCPB57-61ZP	50
63-70mm	HCPB63-70ZP	50
74-80mm	HCPB74-80ZP	50
83-91mm	HCPB83-91ZP	50
100-105mm	HCPB100-105ZP	25
108-114mm	HCPB108-114ZP	25
115-125mm	HCPB115-125ZP	25
159-169mm	HCPB159-169ZP	20

QUICK LOCK CLAMP - DACROMET

RANGE	CODE	PACK QTY
12-14mm	HCPB12-14D	150
15-19mm	HCPB15-19D	150
21-23mm	HCPB21-23D	100
26-28mm	HCPB26-28D	100
32-35mm	HCPB32-35D	100
38-45mm	HCPB38-45D	50
48-56mm	HCPB48-56D	50
57-61mm	HCPB57-61D	50
63-65mm	HCPB63-65D	50
74-80mm	HCPB74-80D	50
83-91mm	HCPB83-91D	50
100-105mm	HCPB100-105D	25
108-114mm	HCPB108-114D	25
115-125mm	HCPB115-125D	25
135-140mm	HCPB135-140D	20
140-146mm	HCPB140-146D	20
159-169mm	HCPB159-169D	20
204-210mm	HCPB204-210D	20



QUICK LOCK CLAMP - STAINLESS		
RANGE	CODE	PACK QTY
15-19mm	HCPB15-19A4	150
21-23mm	HCPB21-23A4	100
26-28mm	HCPB26-28A4	100
32-35mm	HCPB32-35A4	100
38-45mm	HCPB38-45A4	50
48-56mm	HCPB48-56A4	50
63-70mm	HCPB63-70A4	50
74-80mm	HCPB74-80A4	50
83-91mm	HCPB83-91A4	50
108-114mm	HCPB108-114A4	25
159-163mm	HCPB159-163A4	20

SPIRAL DUCT CLAMP

RANGE	CODE	PACK QTY
100mm	HCDB100ZP	25
150mm	HCDB150ZP	20
200mm	HCDB200ZP	15
250mm	HCDB250ZP	10
300mm	HCDB300ZP	10
350mm	HCDB350ZP	10
400mm	HCDB400ZP	10
450mm	HCDB450ZP	5
500mm	HCDB500ZP	5
600mm	HCDB600ZP	5

*Other sizes available on request



WELDED BOSS CLAMP ZINC PLATE		
CODE	DESCRIPTION	BOSS
HCDB15Z-AON	21.2od (15NB) Zinc Pipe Clamp - Welded Boss - AON Listed	M10 & M12
HCDB20Z-AON	27.0od (20NB) Zinc Pipe Clamp - Welded Boss - AON Listed	M10 & M12
HCDB25Z-AON	34.0od (25NB) Zinc Pipe Clamp - Welded Boss - AON Listed	M10 & M12
HCDB32Z-AON	43.0od (32NB) Zinc Pipe Clamp - Welded Boss - AON Listed	M10 & M12
HCDB40Z-AON	48.0od (40NB) Zinc Pipe Clamp - Welded Boss - AON Listed	M10 & M12
HCDB50Z-AON	60.0od (50NB) Zinc Pipe Clamp - Welded Boss - AON Listed	M10 & M12
HCDB65Z-AON	76.0od (65NB) Zinc Pipe Clamp - Welded Boss - AON Listed	M10 & M12
HCDB80Z-AON	89.0od (80NB) Zinc Pipe Clamp - Welded Boss - AON Listed	M10 & M12
HCDB100Z-AON	115od (100NB) Zinc Pipe Clamp - Welded Boss - AON Listed	M10 & M12
HCDB125Z-AON	140od (125NB) Zinc Pipe Clamp - Welded Boss - AON Listed	M10 & M12
HCDB150Z-AON	168od (150NB) Zinc Pipe Clamp - Welded Boss - AON Listed	M10 & M12



WELDED BOSS CLAMP STAINLESS A4		
CODE	DESCRIPTION	BOSS
HCDB15A4-AON	21.2od (15NB) Stainless Pipe Clamp - Welded Boss - AON Listed	M10
HCDB20A4-AON	27.0od (20NB) Stainless Pipe Clamp - Welded Boss - AON Listed	M10
HCDB25A4-AON	34.0od (25NB) Stainless Pipe Clamp - Welded Boss - AON Listed	M10
HCDB32A4-AON	43.0od (32NB) Stainless Pipe Clamp - Welded Boss - AON Listed	M10
HCDB40A4-AON	48.0od (40NB) Stainless Pipe Clamp - Welded Boss - AON Listed	M10
HCDB50A4-AON	60.0od (50NB) Stainless Pipe Clamp - Welded Boss - AON Listed	M10
HCDB65A4-AON	76.0od (65NB) Stainless Pipe Clamp - Welded Boss - AON Listed	M10
HCDB80A4-AON	89.0od (80NB) Stainless Pipe Clamp - Welded Boss - AON Listed	M10
HCDB100A4-AON	115od (100NB) Stainless Pipe Clamp - Welded Boss - AON Listed	M10
HCDB125A4-AON	140od (125NB) Stainless Pipe Clamp - Welded Boss - AON Listed	M10
HCDB150A4-AON	168od (150NB) Stainless Pipe Clamp - Welded Boss - AON Listed	M10



WELDED BOSS CLAMP HDG		
CODE	DESCRIPTION	BOSS
HCDB15G-AON	21.2od (15NB) HDG Pipe Clamp - Welded Boss - AON Listed	M10 & M12
HCDB20G-AON	27.0od (20NB) HDG Pipe Clamp - Welded Boss - AON Listed	M10 & M12
HCDB25G-AON	34.0od (25NB) HDG Pipe Clamp - Welded Boss - AON Listed	M10 & M12
HCDB32G-AON	43.0od (32NB) HDG Pipe Clamp - Welded Boss - AON Listed	M10 & M12
HCDB40G-AON	48.0od (40NB) HDG Pipe Clamp - Welded Boss - AON Listed	M10 & M12
HCDB50G-AON	60.0od (50NB) HDG Pipe Clamp - Welded Boss - AON Listed	M10 & M12
HCDB65G-AON	76.0od (65NB) HDG Pipe Clamp - Welded Boss - AON Listed	M10 & M12
HCDB80G-AON	89.0od (80NB) HDG Pipe Clamp - Welded Boss - AON Listed	M10 & M12
HCDB100G-AON	115od (100NB) HDG Pipe Clamp - Welded Boss - AON Listed	M10 & M12
HCDB125G-AON	140od (125NB) HDG Pipe Clamp - Welded Boss - AON Listed	M10 & M12
HCDB150G-AON	168od (150NB) HDG Pipe Clamp - Welded Boss - AON Listed	M10 & M12



**YOUR GO-TO FOR SECURE
ONSITE & WORKSHOP
STORAGE SOLUTIONS**



**TALK TO US TODAY TO FIND OUT MORE ABOUT WHAT WE
HAVE OFFER ON 0800 555 464 OR sales@fdgnz.com**

LIGHT DUTY SADDLE CLAMP

CODE	DIAMETER	W X T	DESCRIPTION	STEEL PIPE SIZE
FDG4-016G	16 mm	25 x 3	16mm (16 CU) Light Duty Saddle Clamp HDG	16 CU
FDG4-019G	19 mm	25 x 3	19mm (20 CU) Light Duty Saddle Clamp HDG	20 CU
FDG4-021G	21 mm	25 x 3	21mm (15 NB) Light Duty Saddle Clamp HDG	15 NB
FDG4-025G	25mm	25 x 3	25mm (25 CU) Light Duty Saddle Clamp HDG	25 CU
FDG4-027G	27mm	25 x 3	27mm (20 NB) Light Duty Saddle Clamp HDG	20 NB
FDG4-032G	32mm	25 x 3	32mm (32 CU) Light Duty Saddle Clamp HDG	32 CU
FDG4-034G	34mm	25 x 3	34mm (25 NB) Light Duty Saddle Clamp HDG	25 NB
FDG4-038G	38mm	25 x 3	38mm (38 CU) Light Duty Saddle Clamp HDG	38 CU
FDG4-043G	43mm	25 x 3	43mm (32 NB) Light Duty Saddle Clamp HDG	32 NB
FDG4-048G	48mm	25 x 3	48mm (40 NB) Light Duty Saddle Clamp HDG	40 NB
FDG4-051G	51mm	25 x 3	51mm (50 CU) Light Duty Saddle Clamp HDG	50 CU
FDG4-060G	60mm	25 x 3	60mm (50 NB) Light Duty Saddle Clamp HDG	50 NB
FDG4-064G	64mm	25 x 3	64mm (65 CU) Light Duty Saddle Clamp HDG	65 CU
FDG4-073G	73mm	25 x 3	73mm (65 NB) Light Duty Saddle Clamp HDG	65 NB
FDG4-076G	76mm	25 x 3	76mm (80 CU) Light Duty Saddle Clamp HDG	80 CU
FDG4-089G	89mm	25 x 3	89mm (80 NB) Light Duty Saddle Clamp HDG	80 NB
FDG4-095G	95mm	25 x 3	95mm (95 CU) Light Duty Saddle Clamp HDG	95 CU
FDG4-102G	102mm	25 x 3	102mm (100 CU) Light Duty Saddle Clamp HDG	100 CU
FDG4-114G	114mm	25 x 3	114mm (100 NB) Light Duty Saddle Clamp HDG	100 NB

* Note: Custom sizes and finishes available on request.



LIGHT DUTY TWO-PIECE PIPE CLAMP

CODE	DIAMETER	W X T	DESCRIPTION	STEEL PIPE SIZE
FDG6-019G	19 mm	25 x 3	19mm (20 CU) Light Duty Two-Piece Pipe Clamp HDG	20 CU
FDG6-021G	21 mm	25 x 3	21mm (15 NB) Light Duty Two-Piece Pipe Clamp HDG	15 NB
FDG6-025G	25 mm	25 x 3	25mm (25 CU) Light Duty Two-Piece Pipe Clamp HDG	25 CU
FDG6-027G	27 mm	25 x 3	27mm (20 NB) Light Duty Two-Piece Pipe Clamp HDG	20 NB
FDG6-032G	32 mm	25 x 3	32mm (32 CU) Light Duty Two-Piece Pipe Clamp HDG	32 CU
FDG6-034G	34 mm	25 x 3	34mm (25 NB) Light Duty Two-Piece Pipe Clamp HDG	25 NB
FDG6-038G	38 mm	25 x 3	38mm (38 CU) Light Duty Two-Piece Pipe Clamp HDG	38 CU
FDG6-043G	43 mm	25 x 3	43mm (32 NB) Light Duty Two-Piece Pipe Clamp HDG	32 NB
FDG6-048G	48 mm	25 x 3	48mm (40 NB) Light Duty Two-Piece Pipe Clamp HDG	40 NB
FDG6-051G	51 mm	25 x 3	51mm (50 CU) Light Duty Two-Piece Pipe Clamp HDG	50 CU
FDG6-060G	60 mm	25 x 3	60mm (50 NB) Light Duty Two-Piece Pipe Clamp HDG	50 NB
FDG6-064G	64 mm	25 x 3	64mm (65 CU) Light Duty Two-Piece Pipe Clamp HDG	65 CU
FDG6-073G	73 mm	25 x 3	73mm (65 NB) Light Duty Two-Piece Pipe Clamp HDG	65 NB
FDG6-076G	76 mm	25 x 3	76mm (80 CU) Light Duty Two-Piece Pipe Clamp HDG	80 CU
FDG6-089G	89 mm	25 x 3	89mm (80 NB) Light Duty Two-Piece Pipe Clamp HDG	80 NB
FDG6-102G	102 mm	25 x 3	102mm (102 CU) Light Duty Two-Piece Pipe Clamp HDG	100 CU
FDG6-114G	114 mm	25 x 3	114mm (100 NB) Light Duty Two-Piece Pipe Clamp HDG	100 NB
FDG6-127G	127 mm	25 x 3	127mm (125 CU) Light Duty Two-Piece Pipe Clamp HDG	125 CU
FDG6-140G	140 mm	25 x 3	140mm (125 CU) Light Duty Two-Piece Pipe Clamp HDG	125 NB
FDG6-152G	152 mm	25 x 3	152mm (150 CU) Light Duty Two-Piece Pipe Clamp HDG	150 CU
FDG6-165G	165 mm	25 x 3	165mm (165 CU) Light Duty Two-Piece Pipe Clamp HDG	165 CU

* Note: Custom sizes and finishes available on request.





LIGHT DUTY TWO-PIECE YOKE CLAMP

CODE	DIAMETER	W X T	DESCRIPTION	STEEL PIPE SIZE
FDG8-019G	19 mm	20 x 3	19mm (20 CU) Light Duty Two-Piece Yoke Clamp HDG	20 CU
FDG8-021G	21 mm	20 x 3	21mm (15 NB) Light Duty Two-Piece Yoke Clamp HDG	15 NB
FDG8-025G	25 mm	20 x 3	25mm (25 CU) Light Duty Two-Piece Yoke Clamp HDG	25 CU
FDG8-027G	27 mm	20 x 3	27mm (20 NB) Light Duty Two-Piece Yoke Clamp HDG	20 NB
FDG8-032G	32 mm	20 x 3	32mm (32 CU) Light Duty Two-Piece Yoke Clamp HDG	32 CU
FDG8-034G	34 mm	20 x 3	34mm (25 NB) Light Duty Two-Piece Yoke Clamp HDG	25 NB
FDG8-038G	38 mm	20 x 3	38mm (38 CU) Light Duty Two-Piece Yoke Clamp HDG	38 CU
FDG8-043G	43 mm	20 x 3	43mm (32 NB) Light Duty Two-Piece Yoke Clamp HDG	32 NB
FDG8-048G	48 mm	20 x 3	48mm (40 NB) Light Duty Two-Piece Yoke Clamp HDG	40 NB
FDG8-051G	51 mm	20 x 3	51mm (50 CU) Light Duty Two-Piece Yoke Clamp HDG	50 CU
FDG8-060G	60 mm	20 x 3	60mm (50 NB) Light Duty Two-Piece Yoke Clamp HDG	50 NB
FDG8-064G	64 mm	20 x 3	64mm (65 CU) Light Duty Two-Piece Yoke Clamp HDG	65 CU
FDG8-073G	73 mm	20 x 3	73mm (65 NB) Light Duty Two-Piece Yoke Clamp HDG	65 NB
FDG8-076G	76 mm	20 x 3	76mm (80 CU) Light Duty Two-Piece Yoke Clamp HDG	80 CU
FDG8-089G	89 mm	20 x 3	89mm (80 NB) Light Duty Two-Piece Yoke Clamp HDG	80 NB
FDG8-102G	102 mm	20 x 3	102mm (100 CU) Light Duty Two-Piece Yoke Clamp HDG	100 CU
FDG8-114G	114 mm	20 x 3	114mm (100 NB) Light Duty Two-Piece Yoke Clamp HDG	100 NB
FDG8-127G	127 mm	20 x 3	127mm (125 CU) Light Duty Two-Piece Yoke Clamp HDG	125 CU
FDG8-140G	140 mm	20 x 3	140mm (125 CB) Light Duty Two-Piece Yoke Clamp HDG	125 NB
FDG8-152G	152 mm	20 x 3	152mm (150 CU) Light Duty Two-Piece Yoke Clamp HDG	150 CU
FDG8-165G	165 mm	20 x 3	165mm (165 CU) Light Duty Two-Piece Yoke Clamp HDG	165 CU

* Note: Custom sizes and finishes available on request.



PIPE U - BOLTS

CODE	DIAMETER	W X T	DESCRIPTION	STEEL PIPE SIZE
FDG14-021G	21 mm	M10 x 65	M10 x 65mm Medium Duty U Bolts HDG	15 NB
FDG14-027G	27 mm	M10 x 77	M10 x 77mm Medium Duty U Bolts HDG	20 NB
FDG14-034G	34 mm	M10 x 85	M10 x 85mm Medium Duty U Bolts HDG	25 NB
FDG14-043G	43 mm	M10 x 93	M10 x 93mm Medium Duty U Bolts HDG	32 NB
FDG14-048G	48 mm	M10 x 100	M10 x 100mm Medium Duty U Bolts HDG	40 NB
FDG14-051G	51 mm	M10 x 103	M10 x 103mm Medium Duty U Bolts HDG	50 CU
FDG14-060G	60 mm	M10 x 110	M10 x 110mm Medium Duty U Bolts HDG	50 NB
FDG14-076G	76 mm	M12 x 127	M12 x 127mm Medium Duty U Bolts HDG	65 NB
FDG14-089G	89 mm	M12 x 140	M12 x 140mm Medium Duty U Bolts HDG	80 NB
FDG14-102G	102 mm	M12 x 152	M12 x 152mm Medium Duty U Bolts HDG	90 NB
FDG14-114G	114 mm	M12 x 165	M12 x 165mm Medium Duty U Bolts HDG	100 NB
FDG14-140G	140 mm	M12 x 190	M12 x 190mm Medium Duty U Bolts HDG	125 NB
FDG14-165G	165 mm	M12 x 215	M12 x 215mm Medium Duty U Bolts HDG	165 CU
FDG14-168G	168 mm	M12 x 220	M12 x 220mm Medium Duty U Bolts HDG	150 NB
FDG14-219G	219 mm	M16 x 295	M16 x 296mm Medium Duty U Bolts HDG	200 NB
FDG14-273G	273 mm	M20 x 370	M20 x 370mm Medium Duty U Bolts HDG	250 NB
FDG14-324G	324 mm	M20 x 420	M20 x 420mm Medium Duty U Bolts HDG	300 NB
FDG14-356G	356 mm	M20 x 455	M20 x 455mm Medium Duty U Bolts HDG	350 NB
FDG14-406G	406 mm	M20 x 505	M20 x 505mm Medium Duty U Bolts HDG	400 NB
FDG14-457G	457 mm	M24 x 555	M24 x 555mm Medium Duty U Bolts HDG	450 NB
FDG14-508G	508 mm	M24 x 605	M24 x 605mm Medium Duty U Bolts HDG	500 NB
FDG14-610G	610 mm	M24 x 710	M24 x 710mm Medium Duty U Bolts HDG	600 NB

* Note: Custom sizes and finishes available on request.



MEDIUM DUTY SADDLE CLAMP

CODE	DIAMETER	W X T	DESCRIPTION	STEEL PIPE SIZE
FDG15-021G	21 mm	40 x 5	21mm (15 NB) Medium Duty Saddle Clamp HDG	15 NB
FDG15-027G	27 mm	40 x 5	27mm (20 NB) Medium Duty Saddle Clamp HDG	20 NB
FDG15-034G	34 mm	40 x 5	34mm (25 NB) Medium Duty Saddle Clamp HDG	25 NB
FDG15-043G	43 mm	40 x 5	43mm (32 NB) Medium Duty Saddle Clamp HDG	32 NB
FDG15-048G	48 mm	40 x 5	48mm (40 NB) Medium Duty Saddle Clamp HDG	40 NB
FDG15-051G	51 mm	40 x 5	51mm (50 CU) Medium Duty Saddle Clamp HDG	50 CU
FDG15-060G	60 mm	40 x 5	60mm (50 NB) Medium Duty Saddle Clamp HDG	50 NB
FDG15-073G	73 mm	40 x 5	73mm (65 NB) Medium Duty Saddle Clamp HDG	65 NB
FDG15-076G	76 mm	40 x 5	76mm (80 CU) Medium Duty Saddle Clamp HDG	80 CU
FDG15-089G	89 mm	40 x 5	89mm (80 NB) Medium Duty Saddle Clamp HDG	80 NB
FDG15-102G	102 mm	40 x 5	102mm (90 NB) Medium Duty Saddle Clamp HDG	90 NB
FDG15-114G	114 mm	40 x 6	114mm (100 NB) Medium Duty Saddle Clamp HDG	100 NB
FDG15-140G	140 mm	40 x 6	140mm (125 NB) Medium Duty Saddle Clamp HDG	125 NB
FDG15-152G	152 mm	50 x 6	152mm (150 CU) Medium Duty Saddle Clamp HDG	150 CU
FDG15-165G	165 mm	50 x 6	165mm (165 CU) Medium Duty Saddle Clamp HDG	165 CU
FDG15-168G	168 mm	50 x 6	168mm (150 NB) Medium Duty Saddle Clamp HDG	150 NB
FDG15-203G	203 mm	50 x 6	203mm (200 CU) Medium Duty Saddle Clamp HDG	200 CU
FDG15-219G	219 mm	50 x 6	219mm (200 NB) Medium Duty Saddle Clamp HDG	200 NB

* Note Custom sizes and finishes available on request.



Listed By **AON**
Complies to NZS4541:2020

MEDIUM DUTY TWO-PIECE PIPE CLAMP

CODE	DIAMETER	W X T	DESCRIPTION	STEEL PIPE SIZE
FDG16-060G	60 mm	40 x 5	60mm (50 NB) Medium Duty Two-Piece pipe Clamp HDG	50 NB
FDG16-073G	73 mm	41 x 5	73mm (65 NB) Medium Duty Two-Piece pipe Clamp HDG	65 NB
FDG16-076G	76 mm	40 x 5	76mm (80 CU) Medium Duty Two-Piece pipe Clamp HDG	80 CU
FDG16-089G	89 mm	40 x 5	89mm (80 NB) Medium Duty Two-Piece pipe Clamp HDG	80 NB
FDG16-102G	102 mm	40 x 5	102mm (100 CU) Medium Duty Two-Piece pipe Clamp HDG	100 CU
FDG16-114G	114 mm	40 x 6	114mm (100 NB) Medium Duty Two-Piece pipe Clamp HDG	100 NB
FDG16-127G	127 mm	40 x 6	127mm (125 CU) Medium Duty Two-Piece pipe Clamp HDG	125 CU
FDG16-140G	140 mm	40 x 6	140mm (125 NB) Medium Duty Two-Piece pipe Clamp HDG	125 NB
FDG16-152G	152 mm	40 x 6	152mm (150 CU) Medium Duty Two-Piece pipe Clamp HDG	150 CU
FDG16-165G	165 mm	40 x 6	165mm (165 CU) Medium Duty Two-Piece pipe Clamp HDG	165 CU
FDG16-168G	168 mm	40 x 6	168mm (150 NB) Medium Duty Two-Piece pipe Clamp HDG	150 NB
FDG16-178G	178 mm	40 x 6	178mm (175 CU) Medium Duty Two-Piece pipe Clamp HDG	175 CU
FDG16-190G	190 mm	40 x 6	190mm (190 NS) Medium Duty Two-Piece pipe Clamp HDG	190 NS
FDG16-203G	203 mm	40 x 6	203mm (200 CU) Medium Duty Two-Piece pipe Clamp HDG	200 CU
FDG16-219G	219 mm	40 x 6	219mm (200 NB) Medium Duty Two-Piece pipe Clamp HDG	219 NB
FDG16-230G	230 mm	40 x 6	230mm (230 CU) Medium Duty Two-Piece pipe Clamp HDG	230 CU
FDG16-240G	240 mm	40 x 6	240mm (240 NS) Medium Duty Two-Piece pipe Clamp HDG	240 CU
FDG16-250G	250 mm	40 x 6	250mm (250 CU) Medium Duty Two-Piece pipe Clamp HDG	250 CU
FDG16-273G	273 mm	40 x 6	273mm (250 NB) Medium Duty Two-Piece pipe Clamp HDG	250 NB
FDG16-324G	324 mm	40 x 6	324mm (300 NB) Medium Duty Two-Piece pipe Clamp HDG	300 NB

* Note Custom sizes and finishes available on request.



MEDIUM DUTY TWO-PIECE YOKE CLAMP

CODE	DIAMETER	W X T	DESCRIPTION	STEEL PIPE SIZE
FDG18-060G	60 mm	40 x 5	60mm (60 CU) Medium Duty Two-Piece Yoke Clamp HDG	60 CU
FDG18-073G	73 mm	40 x 50	73mm (65 NB) Medium Duty Two-Piece Yoke Clamp HDG	65 NB
FDG18-076G	76 mm	40 x 5	76mm (80 CU) Medium Duty Two-Piece Yoke Clamp HDG	80 CU
FDG18-089G	89 mm	40 x 5	89mm (80 NB) Medium Duty Two-Piece Yoke Clamp HDG	80 NB
FDG18-102G	102 mm	40 x 5	102mm (100 CU) Medium Duty Two-Piece Yoke Clamp HDG	100 CU
FDG18-114G	114 mm	40 x 6	114mm (100 NB) Medium Duty Two-Piece Yoke Clamp HDG	100 NB
FDG18-127G	127 mm	40 x 6	127mm (125 CU) Medium Duty Two-Piece Yoke Clamp HDG	125 CU
FDG18-140G	140 mm	40 x 6	140mm (125 NB) Medium Duty Two-Piece Yoke Clamp HDG	125 NB
FDG18-152G	152 mm	40 x 6	152mm (150 CU) Medium Duty Two-Piece Yoke Clamp HDG	152 CU
FDG18-165G	165 mm	40 x 6	165mm (165 CU) Medium Duty Two-Piece Yoke Clamp HDG	165 CU
FDG18-168G	168 mm	40 x 6	168mm (150 NB) Medium Duty Two-Piece Yoke Clamp HDG	150 NB
FDG18-178G	178 mm	40 x 6	178mm (175 CU) Medium Duty Two-Piece Yoke Clamp HDG	175 CU
FDG18-203G	203 mm	40 x 6	203mm (200 CU) Medium Duty Two-Piece Yoke Clamp HDG	200 CU
FDG18-219G	219 mm	40 x 6	219mm (200 NB) Medium Duty Two-Piece Yoke Clamp HDG	200 NB
FDG18-230G	230 mm	40 x 6	230mm (230 CU) Medium Duty Two-Piece Yoke Clamp HDG	230 CU

* Note Custom sizes and finishes available on request.



Listed By **AON**
Complies to NZS4541:2020

HEAVY DUTY SADDLE CLAMP

CODE	DIAMETER	W X T	DESCRIPTION	STEEL PIPE SIZE
FDG30-168G	168 mm	75 x 10	168mm (150 NB) Heavy Duty Saddle Clamp HDG	150 NB
FDG30-219G	219 mm	75 x 10	219mm (200 NB) Heavy Duty Saddle Clamp HDG	200 NB
FDG30-273G	273 mm	75 x 10	273mm (250 NB) Heavy Duty Saddle Clamp HDG	250 NB
FDG30-324G	324 mm	75 x 10	324mm (300 NB) Heavy Duty Saddle Clamp HDG	300 NB
FDG30-356G	356 mm	75 x 10	356mm (350 NB) Heavy Duty Saddle Clamp HDG	350 NB
FDG30-406G	406 mm	90 x 12	406mm (400 NB) Heavy Duty Saddle Clamp HDG	400 NB
FDG30-457G	457 mm	90 x 12	457mm (450 NB) Heavy Duty Saddle Clamp HDG	450 NB
FDG30-508G	508 mm	90 x 12	508mm (500 NB) Heavy Duty Saddle Clamp HDG	500 NB

* Note Custom sizes and finishes available on request.



**IS THERE SOMETHING ELSE
YOU ARE LOOKING FOR?**

GIVE US A CALL ON 0800 555 464

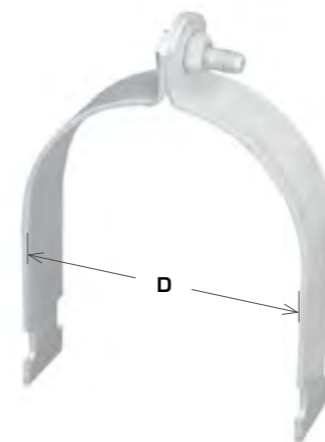




HEAVY DUTY TWO-PIECE PIPE CLAMP

CODE	DIAMETER	W X T	DESCRIPTION	STEEL PIPE SIZE
FDG31-168G	168 mm	75 x 10	168mm (150 NB) Heavy Duty Two-Piece pipe Clamp HDG	150 NB
FDG31-219G	219 mm	75 x 10	219mm (200 NB) Heavy Duty Two-Piece pipe Clamp HDG	200 NB
FDG31-273G	273 mm	75 x 10	273mm (250 NB) Heavy Duty Two-Piece pipe Clamp HDG	250 NB
FDG31-324G	324 mm	75 x 10	324mm (300 NB) Heavy Duty Two-Piece pipe Clamp HDG	300 NB
FDG31-356G	356 mm	75 x 12	356mm (350 NB) Heavy Duty Two-Piece pipe Clamp HDG	350 NB
FDG31-406G	406 mm	75 x 12	406mm (400 NB) Heavy Duty Two-Piece pipe Clamp HDG	400 NB
FDG31-457G	457 mm	75 x 16	457mm (450 NB) Heavy Duty Two-Piece pipe Clamp HDG	450 NB
FDG31-508G	508 mm	75 x 16	508mm (500 NB) Heavy Duty Two-Piece pipe Clamp HDG	500 NB
FDG31-610G	610 mm	75 x 16	610mm (600 NB) Heavy Duty Two-Piece pipe Clamp HDG	600 NB

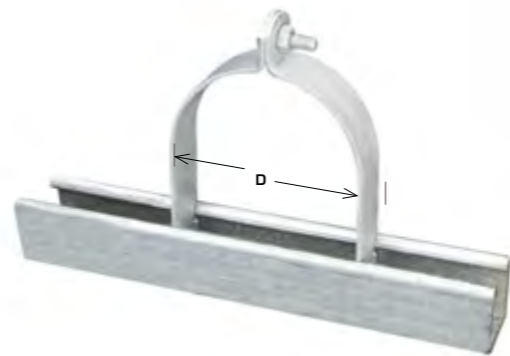
* Note Custom sizes and finishes available on request.



2PC CHANNEL CLIP

D	PIPE	CODE	MATERIAL	CARTON QTY
8	8CU	FDG132-008-2PCE	32x1.6	100
10	10CU	FDG132-010-2PCE	32x1.6	100
13	15CU	FDG132-013-2PCE	32x1.6	100
17	17CU	FDG132-017-2PCE	32x1.6	100
20	20CU	FDG132-020-2PCE	32x1.6	100
21	15NB	FDG132-021-2PCE	32x1.6	100
25	25CU	FDG132-025-2PCE	32x1.6	100
27	20NB	FDG132-027-2PCE	32x1.6	100
29	29NS	FDG132-029-2PCE	32x2.0	100
32	32UC	FDG132-032-2PCE	32x2.0	100
34	25NB	FDG132-034-2PCE	32x2.0	100
38	40CU	FDG132-038-2PCE	32x2.0	100
43	32NB	FDG132-043-2PCE	32x2.0	100
48	40NB	FDG132-048-2PCE	32x2.0	100
51	50CU	FDG132-051-2PCE	32x2.5	50
54	54NS	FDG132-054-2PCE	32x2.5	50
57	57NS	FDG132-057-2PCE	32x2.5	50
60	50NB	FDG132-060-2PCE	32x2.5	50
64	65CU	FDG132-064-2PCE	32x2.5	50
67	67NS	FDG132-067-2PCE	32x2.5	50
70	70NS	FDG132-070-2PCE	32x2.5	50
73	65NB	FDG132-073-2PCE	32x2.5	50
76	80CU	FDG132-076-2PCE	32x2.5	50
79	79NS	FDG132-079-2PCE	32x2.5	50
83	83NS	FDG132-083-2PCE	32x2.5	50
86	86NS	FDG132-086-2PCE	32x2.5	50
89	80NB	FDG132-089-2PCE	32x2.5	50
95	92NS	FDG132-095-2PCE	32x2.5	50
98	98NS	FDG132-098-2PCE	32x2.5	50
102	102CU	FDG132-102-2PCE	32x2.5	50
105	105NS	FDG132-105-2PCE	32x2.5	50
108	108NS	FDG132-108-2PCE	32x2.5	50
110	110NS	FDG132-110-2PCE	32x2.5	50
115	100NB	FDG132-115-2PCE	32x2.5	50
117	117NS	FDG132-117-2PCE	32x2.5	50

2PC CHANNEL CLIP				
D	PIPE	CODE	MATERIAL	CARTON QTY
121	121NS	FDG132-121-2PCE	32x2.5	50
127	125CU	FDG132-127-2PCE	32x2.5	50
140	125NB	FDG132-140-2PCE	32x2.5	50
146	146NS	FDG132-146-2PCE	32x2.5	50
152	152CU	FDG132-152-2PCE	32x2.5	50
159	159NS	FDG132-159-2PCE	32x2.5	50
165	150NB	FDG132-165-2PCE	32x2.5	50
168	150NB	FDG132-168-2PCE	32x2.5	50
171	171NS	FDG132-171-2PCE	32x2.5	50
178	178NS	FDG132-178-2PCE	32x2.5	50
190	190NS	FDG132-190-2PCE	32x2.5	50
203	200CU	FDG132-203-2PCE	32x2.5	50
220	220NB	FDG132-220-2PCE	32x2.5	50
228	228NS	FDG132-228-2PCE	32x2.5	50
240	240NS	FDG132-240-2PCE	32x2.5	50
252	252CU	FDG132-252-2PCE	32x2.5	50
268	265NS	FDG132-268-2PCE	32x2.5	50
275	250NB	FDG132-275-2PCE	32x2.5	50
302	300CU	FDG132-302-2PCE	32x2.5	50
315	315NS	FDG132-315-2PCE	32x2.5	50
324	300NB	FDG132-324-2PCE	32x2.5	50



MEDIUM STICKERS 400MM X 27MM	
CODE	DESCRIPTION
59S-CW27X400	CHILLED WATER
59S-CWF27X400	CHILLED WATER FLOW
59S-CWR27X400	CHILLED WATER RETURN
59S-HHW27X400	HEATING HOT WATER
59S-HHWF27X400	HEATING HOT WATER FLOW
59S-HHWR27X400	HEATING HOT WATER RETURN
59S-CRW27X400	CONDENSOR WATER
59S-CRWF27X400	CONDENSOR WATER FLOW
59S-CRWR27X400	CONDENSOR WATER RETURN
59S-HWR27X400	HOT WATER
59S-HW27X400	HOT WATER FLOW
59S-HWF27X400	HOT WATER RETURN
59S-HWR27X400	COLD WATER
59S-DCW27X400	DOMESTIC COLD WATER
59S-DHW27X400	DOMESTIC HOT WATER
59S-CGW27X400	COOLING WATER
59S-HGR27X400	HEATING WATER
59S-PW27X400	POTABLE WATER
59S-NWP27X400	NON POTABLE WATER
59S-ST27X400	STORM WATER
59S-C27X400	CONDENSATE
59S-D27X400	DRAINS
59S-S27X400	SEWERAGE
59S-TW27X400	TRADE WASTE
59S-V27X400	VENT
59S-G27X400	GREASE
59S-NG27X400	NATURAL GAS
59S-NGK27X400	NATURAL GAS KPA
59S-R27X400	REFRIGERATION
59S-FHR27X400	FIRE HOSE REEL
59S-FHR27X400	FIRE HYDRANT
59S-FS27X400	FIRE SERVICE
59S-FSS27X400	FIRE SPRINKLERS
59S-VM27X400	VACCUM
59S-SM27X400	STEAM
59S-RW27X400	RAIN WATER
59S-FW27X400	FILTERED WATER

Quick and Easy Ordering Online with the **FDG Trade Store.**

TRADE.FDGNZ.COM



LARGE STICKERS 400MM X 50MM	
CODE	DESCRIPTION
59S-CW-50X400	CHILLED WATER
59S-CWF-50X400	CHILLED WATER FLOW
59S-CWR-50X400	CHILLED WATER RETURN
59S-HHW-50X400	HEATING HOT WATER
59S-HHWF-50X400	HEATING HOT WATER FLOW
59S-HHWR-50X400	HEATING HOT WATER RETURN
59S-CRW-50X400	CONDENSOR WATER
59S-CRWF-50X400	CONDENSOR WATER FLOW
59S-CRWR-50X400	CONDENSOR WATER RETURN
59S-HW-50X400	HOT WATER
59S-HWF-50X400	HOT WATER FLOW
59S-HWR-50X400	HOT WATER RETURN
59S-CE-50X400	COLD WATER
59S-DCW-50X400	DOMESTIC COLD WATER
59S-DHW-50X400	DOMESTIC HOT WATER
59S-CGW-50X400	COOLING WATER
59S-HGR-50X400	HEATING WATER
59S-PW-50X400	POTABLE WATER
59S-NPW-50X400	NON POTABLE WATER
59S-SW-50X400	STORM WATER
59S-C-50X400	CONDENSATE
59S-D-50X400	DRAINS
59S-S-50X400	SEWERAGE
59S-TW-50X400	TRADE WASTE
59S-V-50X400	VENT
59S-G-50X400	GREASE
59S-NG-50X400	NATURAL GAS
59S-NGK-50X400	NATURAL GAS KPA
59S-R-50X400	REFRIGERATION
59S-FHR-50X400	FIRE HOSE REEL
59S-FH-50X400	FIRE HYDRANT
59S-FS-50X400	FIRE SERVICE
59S-FSS-50X400	FIRE SPRINKLERS
59S-WM-50X400	VACUUM
59S-SM-50X400	STEAM
59S-RW-50X400	RAIN WATER
59S-FW-50X400	FILTERED WATER



HANGER CLEVIS			
CODE	DESCRIPTION	FINISH	PACK
FDG153-M10	M10	Galv	50
FDG153-M12	M12	Galv	50
FDG152-M16	M16	Galv	10
FDG152-M20	M20	Galv	10



EPDM RUBBER PROFILE			
CODE	DESCRIPTION	FINISH	QTY
53RUB-18	18x1000mm	Black EPDM	1M
53RUB-20	20x1000mm	Black EPDM	1M
53RUB-25	25x1000mm	Black EPDM	1M
53RUB-40	40x1000mm	Black EPDM	1M

FDG
FASTENERS DIRECT GLOBAL

**KEEPING BUSINESS'S
MOVING & MAKING**

FDGNZ.COM



FOILFLEX II

Premium performance pipe insulation offering lower costs and maximum energy savings.

PRODUCT DESCRIPTION

- Completely closed cell, physically crosslinked foam pipe insulation.
- Heat bonded factory applied reinforced aluminium foil.
- Pre-slit for faster installation.
- Flexible, tough and durable.
- Excellent compression resistance due to its crosslinked foam structure.
- Superior insulating properties compared to other flexible closed cell foams.
- Very high vapour diffusion resistance, Class 1 Vapour Retarder under ASHRAE 2009.
- No claddings required for internal applications.
- Conforms to ISO 5659-2 "Smoke Density and Toxicity".
- Anti-microbial.
- Green Star Compliant Product (VOC).
- Complies to NFPA 90A & NFPA 90B.



Reinforced Aluminium Foil

Very high vapour diffusion resistance

FOILFLEXII NO-CLAD

Foilflex No-Clad thermal lagging is wrapped in a puncture resistant and saltater resistant multilayer aluminum foil that has a UV and weather durable coating. Perfect for the outdoors and harsh environments.

* No-Clad available on request



FOILFLEX LAGGING - 25MM	
CODE	DESCRIPTION
55FF1.2X2.4X0.025	FoilFlex Thermal Lagging Sheet - 1.2m x 2.4m x .025m (2.8m sq)
55FF1.2X2.4X0.025-NC	FoilFlex No Clad Thermal Lagging Sheet - 1.2m x 2.4m x .025m (2.8m sq)
55FF15CUX25	FoilFlex Thermal Lagging - 15Cu x25mm x2mtr
55FF16CUX25	FoilFlex Thermal Lagging - 16Cu x25mm x2mtr
55FF20CUX25	FoilFlex Thermal Lagging - 20Cu x25mm x2mtr
55FF22CUX25	FoilFlex Thermal Lagging - 22Cu x25mm x2mtr
55FF25CUX25	FoilFlex Thermal Lagging - 25Cu x25mm x2mtr
55FF27CUX25	FoilFlex Thermal Lagging - 27Cu x25mm x2mtr
55FF28CUX25	FoilFlex Thermal Lagging - 28Cu x25mm x2mtr
55FF32CUX25	FoilFlex Thermal Lagging - 32Cu x25mm x2mtr
55FF34CUX25	FoilFlex Thermal Lagging - 34Cu x25mm x2mtr
55FF35CUX25	FoilFlex Thermal Lagging - 35Cu x25mm x2mtr
55FF38CUX25	FoilFlex Thermal Lagging - 38Cu x25mm x2mtr
55FF40CUX25	FoilFlex Thermal Lagging - 40Cu x25mm x2mtr
55FF42CUX25	FoilFlex Thermal Lagging - 42Cu x25mm x2mtr
55FF48CUX25	FoilFlex Thermal Lagging - 48Cu x25mm x2mtr
55FF50CUX25	FoilFlex Thermal Lagging - 50Cu x25mm x2mtr
55FF51CUX25	FoilFlex Thermal Lagging - 51Cu x25mm x2mtr
55FF54CUX25	FoilFlex Thermal Lagging - 54Cu x25mm x2mtr
55FF60CUX25	FoilFlex Thermal Lagging - 60Cu x25mm x2mtr
55FF64CUX25	FoilFlex Thermal Lagging - 64Cu x25mm x2mtr
55FF65CUX25	FoilFlex Thermal Lagging - 65Cu x25mm x2mtr
55FF67CUX25	FoilFlex Thermal Lagging - 67Cu x25mm x2mtr
55FF76CUX25	FoilFlex Thermal Lagging - 76Cu x25mm x2mtr
55FF80CUX25	FoilFlex Thermal Lagging - 80Cu x25mm x2mtr
55FF89CUX25	FoilFlex Thermal Lagging - 89Cu x25mm x2mtr
55FF91CUX25	FoilFlex Thermal Lagging - 91Cu x25mm x2mtr
55FF100CUX25	FoilFlex Thermal Lagging - 100Cu x25mm x2mtr
55FF102CUX25	FoilFlex Thermal Lagging - 102Cu x25mm x2mtr
55FF110CUX25	FoilFlex Thermal Lagging - 110Cu x25mm x2mtr
55FF115CUX25	FoilFlex Thermal Lagging - 115Cu x25mm x2mtr
55FF125CUX25	FoilFlex Thermal Lagging - 125Cu x25mm x2mtr
55FF127CUX25	FoilFlex Thermal Lagging - 127Cu x25mm x2mtr
55FF141CUX25	FoilFlex Thermal Lagging - 141Cu x25mm x2mtr
55FF150CUX25	FoilFlex Thermal Lagging - 150Cu x25mm x2mtr
55FF152CUX25	FoilFlex Thermal Lagging - 152Cu x25mm x2mtr
55FF160CUX25	FoilFlex Thermal Lagging - 160Cu x25mm x2mtr
55FF168CUX25	FoilFlex Thermal Lagging - 168Cu x25mm x2mtr
55FF180CUX25	FoilFlex Thermal Lagging - 180Cu x25mm x2mtr
55FF204CUX25	FoilFlex Thermal Lagging - 204Cu x25mm x2mtr
55FF219CUX25	FoilFlex Thermal Lagging - 219Cu x25mm x2mtr
55FF225CUX25	FoilFlex Thermal Lagging - 225Cu x25mm x2mtr
55FF250CUX25	FoilFlex Thermal Lagging - 250Cu x25mm x2mtr
55FF254CUX25	FoilFlex Thermal Lagging - 254Cu x25mm x2mtr
55FF280CUX25	FoilFlex Thermal Lagging - 280Cu x25mm x2mtr

*Other wall thickness available on request.



FOAM BLOCKS

Light weight and extremely tough, Thermobreak Thermaloc is a high density closed cell, cross linked polyethylene polymer foam pipe support for hot and cold applications.

EASY & SAFE TO INSTALL

Thermaloc installation is as simple as placing the two pieces over the pipe, squeezing together gently and applying foil tape (supplied separately). No cutting required means no fibres, no dust, no mess to clean up afterwards and no need for protective face masks and gloves.

BUILT TO PERFORM, BUILT TO LAST

Thermaloc's closed cell technology is unaffected by water and humidity. It is also resistant to detergents, diluted acids, alkalis, alcohols, esters and fungi, ensuring performance in even the most demanding applications and over the life of the installation.

Physical Properties

Material:	Crosslinked Closed Cell Polyolefin Foam
Density:	300kg/m ³
Moisture absorption by volume: (internal)	<1% w/w
Resistance to fungi:	Good
Ozone Resistance:	Excellent
UV Resistance:	Excellent
Operating Temperature Range:	-40 °C to 105 °C
Thermal Conductivity: (ASTM C518)	0.069 W/mk
VOC Emission Rate: (ASTM D5116)	Low VOC Emitting ("Green Star")
Compression Strength: (internal)	850 kPa @ 10% deflection 970 kPa @ 25% deflection 1540 kPa @ 50% deflection



Size Availability

Nominal ID A (mm) Sizes: 6.35 to 450 Materials: Available in Copper, IPS & PPR
BS 6853 Annex B (mm)
13 40
15 50
25 55
30 63
*Other wall thickness available upon request
On Pipe Length C (mm) 50 75 (available on request)
*Flat based Thermaloc available for pipe sizes DN 100 / NPS 4 & above

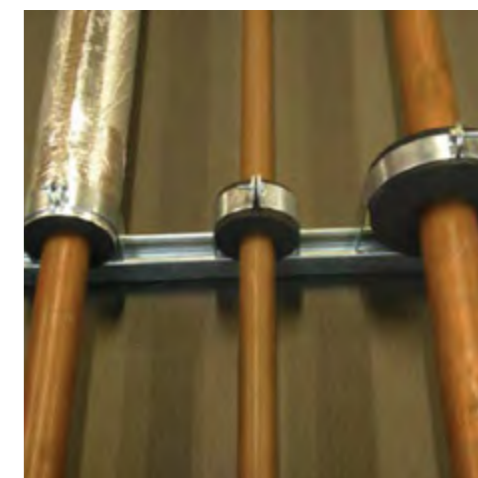


Fire & Smoke Performance

BS 6853 Annex B (Smoke Toxicity)	Complies (R<1.0)
BS 6853 Annex B (Foil Tape Faced)	Complies (AS 4254)

HOT & COLD PIPE SUPPORTS

THERMALOC	
CODE	EXTENDED DESCRIPTION
53TLPS20X25F	Thermaloc Foam Block 20mm Wall x 25mm ID
53TLPS23X25F	Thermaloc Foam Block 23mm Wall x 25mm ID
53TLPS25X20F	Thermaloc Foam Block 25mm Wall x 20mm ID
53TLPS25X22F	Thermaloc Foam Block 25mm Wall x 22mm ID
53TLPS25X25F	Thermaloc Foam Block 25mm Wall x 25mm ID
53TLPS25X27F	Thermaloc Foam Block 25mm Wall x 27mm ID
53TLPS25X28F	Thermaloc Foam Block 25mm Wall x 28mm ID
53TLPS25X32F	Thermaloc Foam Block 25mm Wall x 32mm ID
53TLPS25X34F	Thermaloc Foam Block 25mm Wall x 34mm ID
53TLPS25X35F	Thermaloc Foam Block 25mm Wall x 35mm ID
53TLPS25X38F	Thermaloc Foam Block 25mm Wall x 38mm ID
53TLPS25X40F	Thermaloc Foam Block 25mm Wall x 40mm ID
53TLPS25X42F	Thermaloc Foam Block 25mm Wall x 42mm ID
53TLPS25X48F	Thermaloc Foam Block 25mm Wall x 48mm ID
53TLPS25X51F	Thermaloc Foam Block 25mm Wall x 51mm ID
53TLPS25X54F	Thermaloc Foam Block 25mm Wall x 54mm ID
53TLPS25X60F	Thermaloc Foam Block 25mm Wall x 60mm ID
53TLPS25X64F	Thermaloc Foam Block 25mm Wall x 64mm ID
53TLPS25X67F	Thermaloc Foam Block 25mm Wall x 67mm ID
53TLPS25X74F	Thermaloc Foam Block 25mm Wall x 74mm ID
53TLPS25X80F	Thermaloc Foam Block 25mm Wall x 80mm ID
53TLPS25X102F	Thermaloc Foam Block 25mm Wall x 102mm ID
53TLPS25X106F	Thermaloc Foam Block 25mm Wall x 106mm ID
53TLPS25X108F	Thermaloc Foam Block 25mm Wall x 108mm ID
53TLPS25X110F	Thermaloc Foam Block 25mm Wall x 110mm ID
53TLPS25X114F	Thermaloc Foam Block 25mm Wall x 114mm ID
53TLPS25X115F	Thermaloc Foam Block 25mm Wall x 115mm ID
53TLPS25X127F	Thermaloc Foam Block 25mm Wall x 127mm ID
53TLPS25X141F	Thermaloc Foam Block 25mm Wall x 141mm ID
53TLPS25X150F	Thermaloc Foam Block 25mm Wall x 150mm ID
53TLPS25X152F	Thermaloc Foam Block 25mm Wall x 152mm ID
53TLPS25X219F	Thermaloc Foam Block 25mm Wall x 219mm ID
53TLPS25X225F	Thermaloc Foam Block 25mm Wall x 225mm ID
53TLPS25X254F	Thermaloc Foam Block 25mm Wall x 254mm ID
53TLPS25X273F	Thermaloc Foam Block 25mm Wall x 273mm ID



*Custom wall thicknesses and sizes available.

SOUNDLAG™

Soundlag has a highly dense and flexible mass layer providing excellent sound reduction properties. The decoupling layer breaks the vibration path between substrate and the mass barrier, allowing the vinyl external wrap to remain flexible - optimising performance.

SYSTEM DESIGN CONSIDERATIONS

When designing a system using Soundlag, sound penetration through ceilings must be taken into account to ensure effective sound reduction, especially from down-lights, air conditioning ducting, access hatches and where lightweight ceilings such as mineral fibre tiles are used.

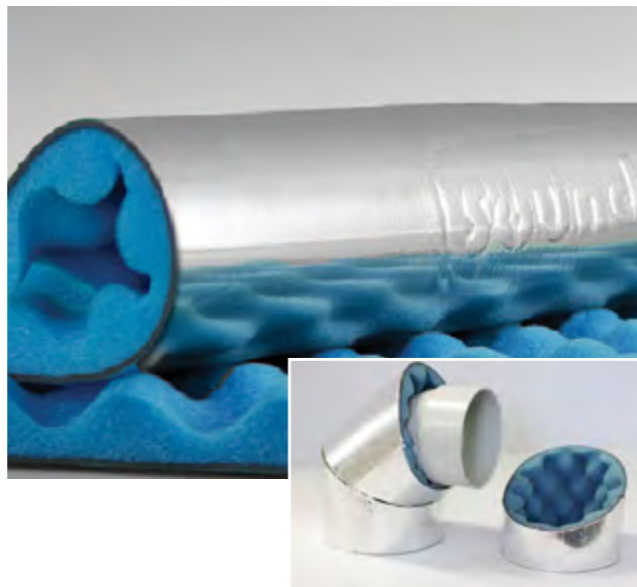


INSTALLATION

Soundlag is easily installed using Soundtape, a high quality, self adhesive, reinforced foil tape. To ensure a high quality fit-out, place 3 circumferential wraps of Soundtape every 300 - 400 mm, i.e. 3 wraps per 1m length pipe.

FEATURES

- Dual benefit as a noise barrier and noise absorber.
- The external foil facing offers a fire resistant covering and an excellent surface to join adjacent sheets.
- Free from odour producing oils and bitumen.
- Can cut to size and simple to install.
- Easy to bond with matching tape or equivalent high quality reinforced foil tape.
- Endorsed and tested by leading acoustic consultants and engineers.
- Accredited to ISO 9001 Quality Control Standard.



SOUNDLAG RANGE			
CODE	THICKNESS	DESCRIPTION	BARRIER WEIGHT
55PT1.35X5	25mm	Pyrotek 4525C Acoustic Soundlag 1350mm x 5000mm Roll	5 kg/m ²
55PT1.35X3-8025C	29mm	Pyrotek 8025C Acoustic Soundlag 1350mm x 3000mm Roll	8 kg/m ²

ENGINEERING DATA AT YOUR FINGERTIPS!



HAVE YOU CHECKED OUT THE ENGINEERING RESOURCES AVAILABLE ON THE FDG WEBSITE?

Come and take a look! Simply click on the "ENGINEERING" tab at the top of the screen to open a drop down menu that will give you access to a variety of handy resources. This includes; **Technical Product Specification documents, CAD Models and Assemblies, Design Services, and more.**

You have the option to view the data online or to download it for print. We are continuously expanding our resource library to better cater to your engineering needs, so keep an eye out for any new additions.

WHATS INSIDE

