

Technical
Product Specifications:

CABLE TRAY

Approval/calculation possibilities:

- NZS1170.5:2009
- NZS 4219:2009
- AS/NZS 4680:2006



FDG CABLE TRAY

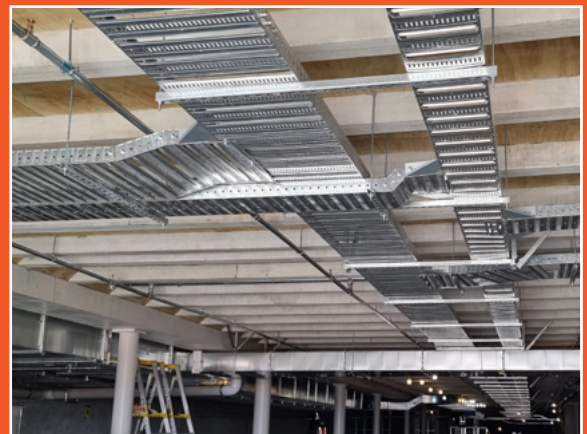
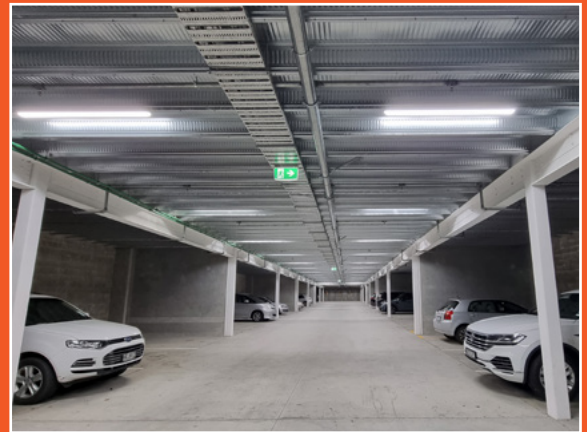
FDG Cable Tray is designed to continuously support cable systems including; Power, Data, and Audio Visual. A quick and easy system to install without the need for specialised tools or equipment, makes it a first choice for Commercial and Industrial electricians.

Available in a range of cable laying depths and widths, we have a solution that works for your job. This tray is stocked in a range of Pre-Galv and Hot Dip Galv finishes, which can also be powder coated and painted in a wide range of colours on request.

The FDG Tray System can be easily modified and adapted to accommodate changes in cable configurations, making it a highly versatile solution for projects of all sizes. It also allows for easy access to cables, which simplifies future maintenance and repair work.

Advantages of using FDG CABLE TRAY

- Easy to install with no specialised tools required.
 - Modular System.
 - Powder Coating and Painting of Cable Tray available on request.
 - Wide Range of sizes and support capacities available.
 - Adjustable and configurable to suit your project.
-



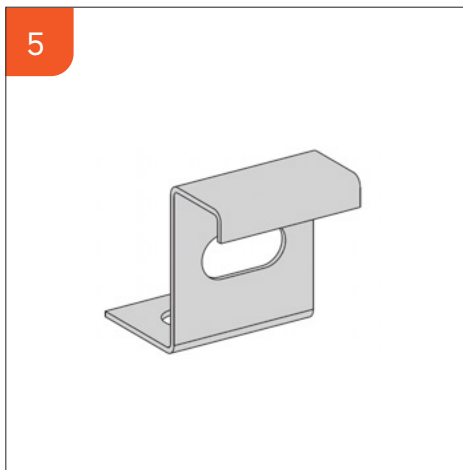
Contents

4



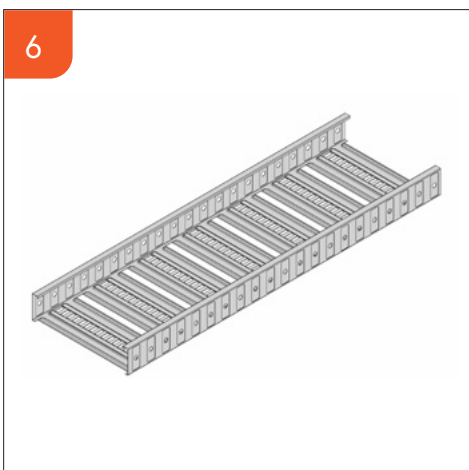
CT3 CABLE TRAY
Medium Duty

5



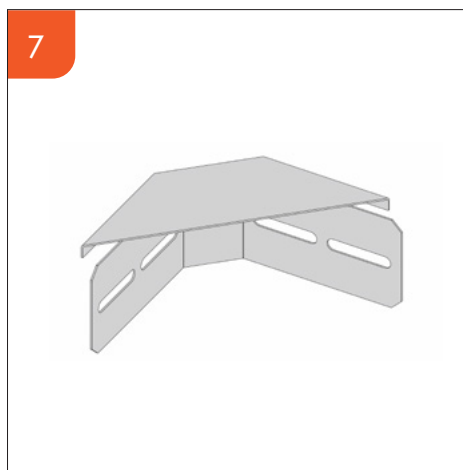
CT3 ACCESSORIES
Medium Duty

6



CT5 CABLE TRAY
Medium Duty

7



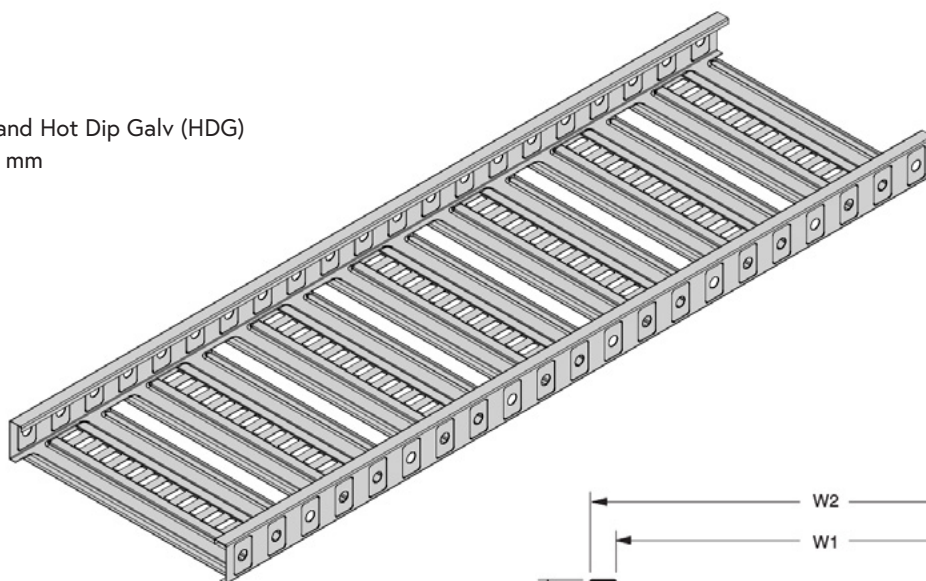
CT5 ACCESSORIES
Medium Duty

FDG CT3 Cable Tray

Medium Duty

[BACK TO CONTENTS](#)

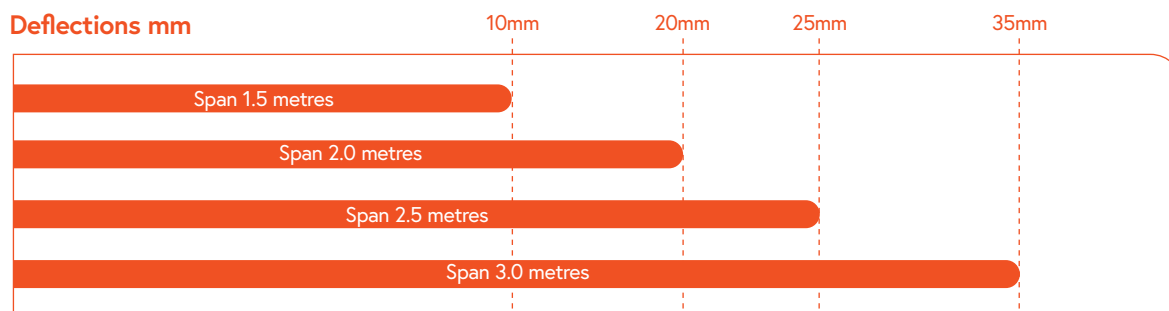
- **Safety Factor:** 1.5
- **Finish:** Pre-Galv (Z275) and Hot Dip Galv (HDG)
- **Material:** Thickness: 0.8 mm



CT3 Cable Tray - Medium Duty

Code	Cable Laying Width mm "W1"	Overall Width mm "W2"	Cable Laying Depth mm	Length mm	Overall Height mm	Weight Pre-Galv	Weight Hot Dip Galv
FDG-CT3150	150	172	45	3000	50	5.3 kg	5.7 kg
FDG-CT3300	300	322	45	3000	50	7.8 kg	8.1 kg
FDG-CT3450	450	472	45	3000	50	10.1 kg	10.6 kg
FDG-CT3600	600	622	45	3000	50	12.6 kg	13.1 kg

Deflections mm



Allowable Load

130kg/m 75kg/m 50kg/m 35kg/m

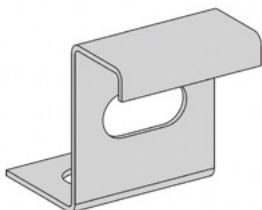
*FDG-CT3 has been tested in accordance with the NEMA requirements. The data displayed is based on physical test results of a 600 wide section and may vary for other widths. The Deflections have been provided as a guide based on continuous spans, and cannot be applied to end spans.

FDG CT3 Accessories

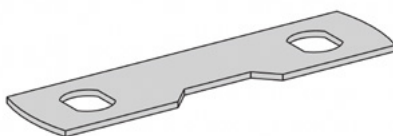
Medium Duty

[BACK TO CONTENTS](#)

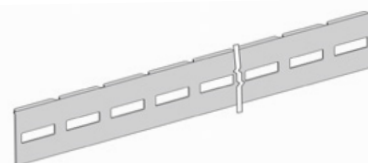
Side Hold Down Bracket



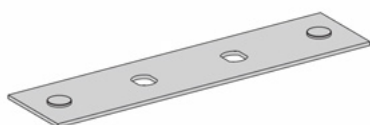
Riser Plate



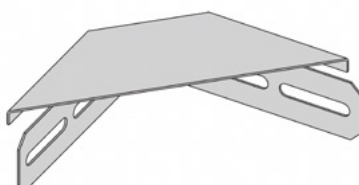
Radius Plate



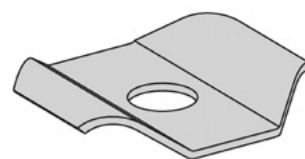
Splice Plate



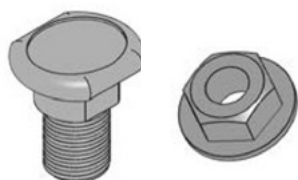
T Bracket



Centre Hold Down Clamp



Splice Bolt and Nuts

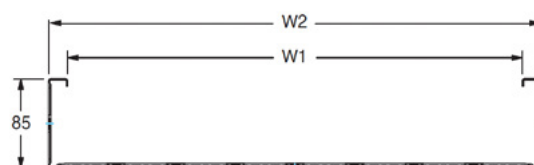
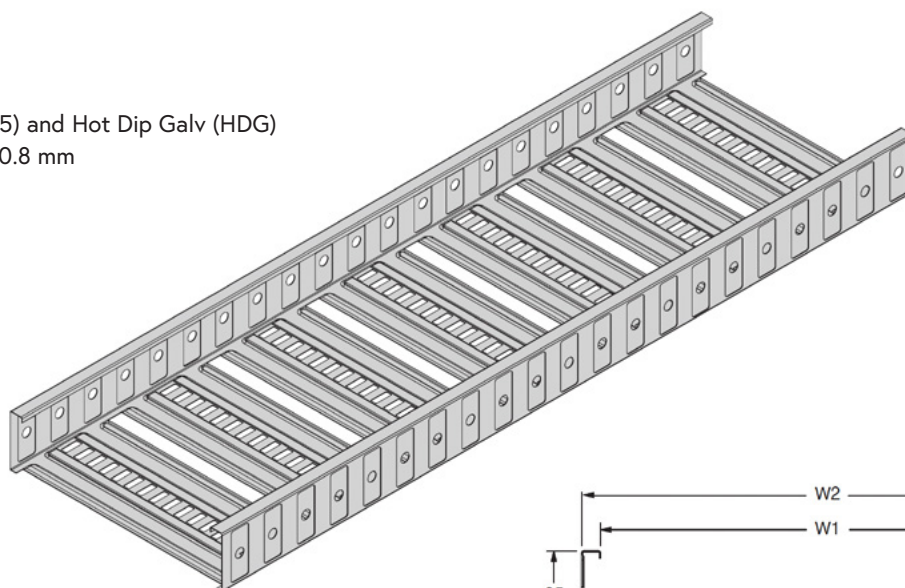


FDG CT5 Cable Tray

Medium Duty

[BACK TO CONTENTS](#)

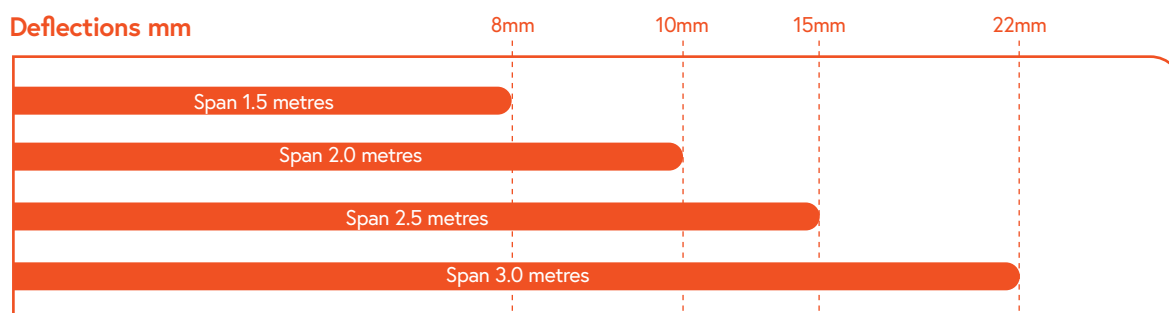
- **Safety Factor:** 1.5
- **Finish:** Pre-Galv (Z275) and Hot Dip Galv (HDG)
- **Material:** Thickness: 0.8 mm



CT3 Cable Tray - Medium Duty

Code	Cable Laying Width mm "W1"	Overall Width mm "W2"	Cable Laying Depth mm	Length mm	Overall Height mm	Weight Pre-Galv	Weight Hot Dip Galv
FDG-CT5150	150	172	80	3000	85	5.3 kg	5.7 kg
FDG-CT5300	300	322	80	3000	85	7.8 kg	8.1 kg
FDG-CT5450	450	472	80	3000	85	10.1 kg	10.6 kg
FDG-CT5600	600	622	80	3000	85	12.6 kg	13.1 kg

Deflections mm



Allowable Load

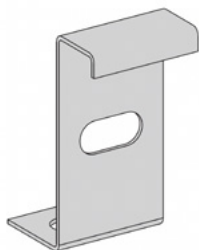
*FDG-CT5 has been tested in accordance with the NEMA requirements. The data displayed is based on physical test results of a 600 wide section and may vary for other widths. The Deflections have been provided as a guide based on continuous spans, and cannot be applied to end spans.

FDG CT5 Accessories

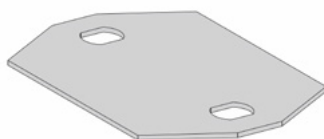
Medium Duty

[BACK TO CONTENTS](#)

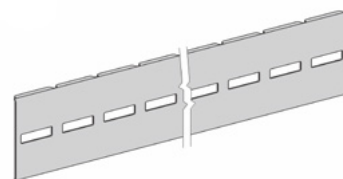
Side Hold Down Bracket



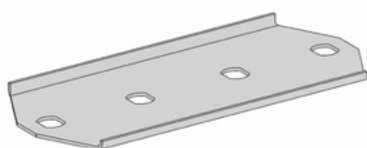
Riser Plate



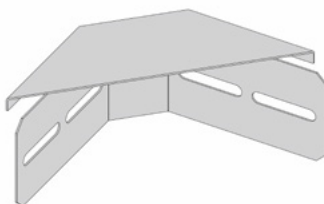
Radius Plate



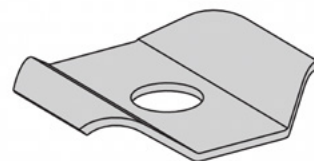
Splice Plate



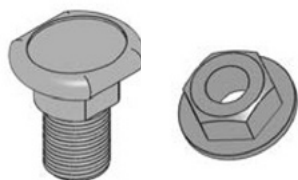
T Bracket



Centre Hold Down Clamp



Splice Bolt and Nuts





sales@fdgnz.com

20 Mansel Dr, Warkworth, Auckland 0910 New Zealand

09-275-6811