

Technical Product Specifications:

CABLE TRAY

Approval/calculation possibilities:

- NZS1170.5:2009
- NZS 4219:2009
- AS/NZS 4680:2006

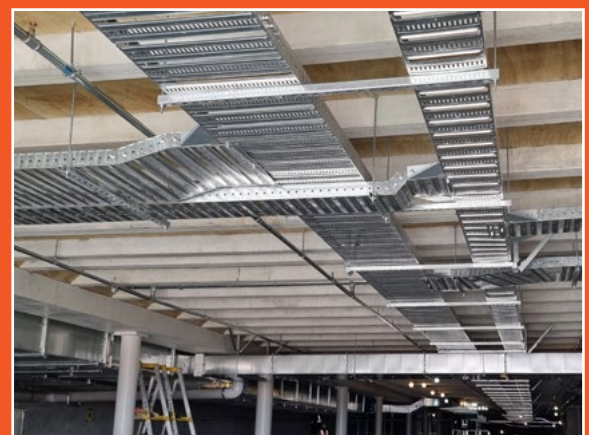
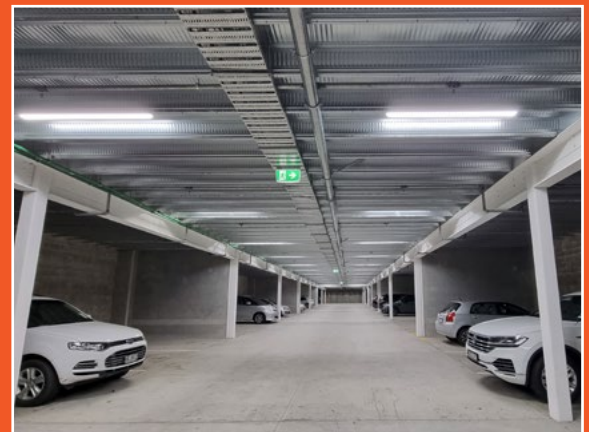


FDG CABLE TRAY

FDG Cable Tray is designed to continuously support cable systems including; Power, Data, and Audio Visual. A quick and easy system to install without the need for specialised tools or equipment, makes it a first choice for Commercial and Industrial electricians.

Available in a range of cable laying depths and widths, we have a solution that works for your job. This tray is stocked in a range of Pre-Galv and Hot Dip Galv finishes, which can also be powder coated and panted in a wide range of colours on request.

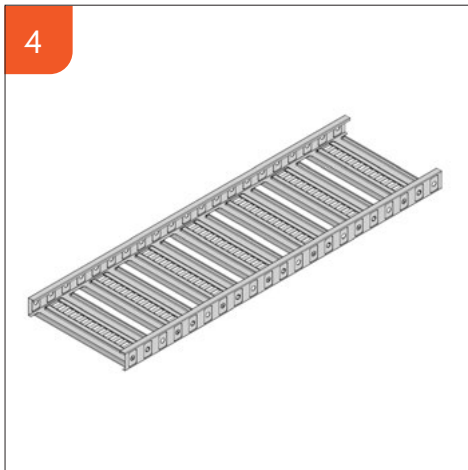
The FDG Tray System can be easily modified and adapted to accommodate changes in cable configurations, making it a highly versatile solution for projects of all sizes. It also allows for easy access to cables, which simplifies future maintenance and repair work.



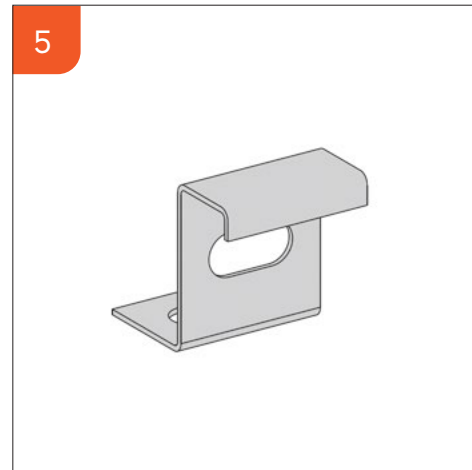
Advantages of using FDG CABLE TRAY

- Easy to install with no specialised tools required.
 - Modular System.
 - Powder Coating and Painting of Cable Tray available on request.
 - Wide Range of sizes and support capacities available.
 - Adjustable and configurable to suit your project.
-

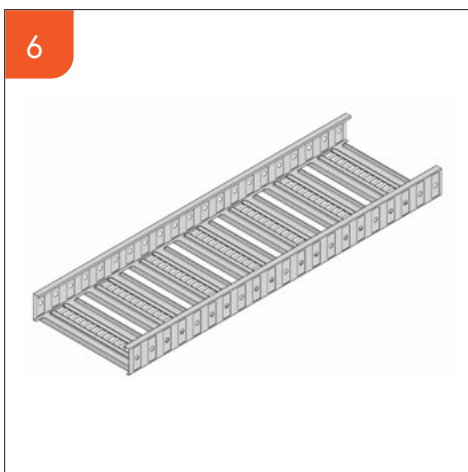
■ Contents



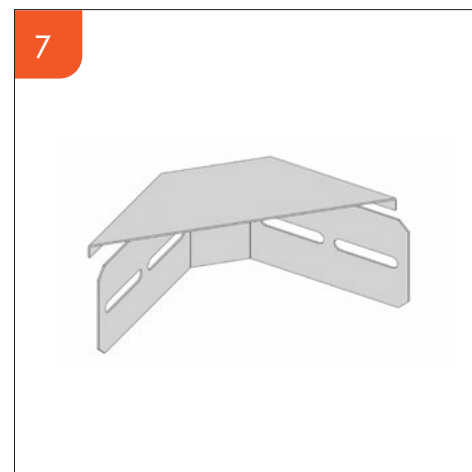
CT3 CABLE TRAY
Heavy Duty



CT3 ACCESSORIES
Heavy Duty



CT5 CABLE TRAY
Heavy Duty

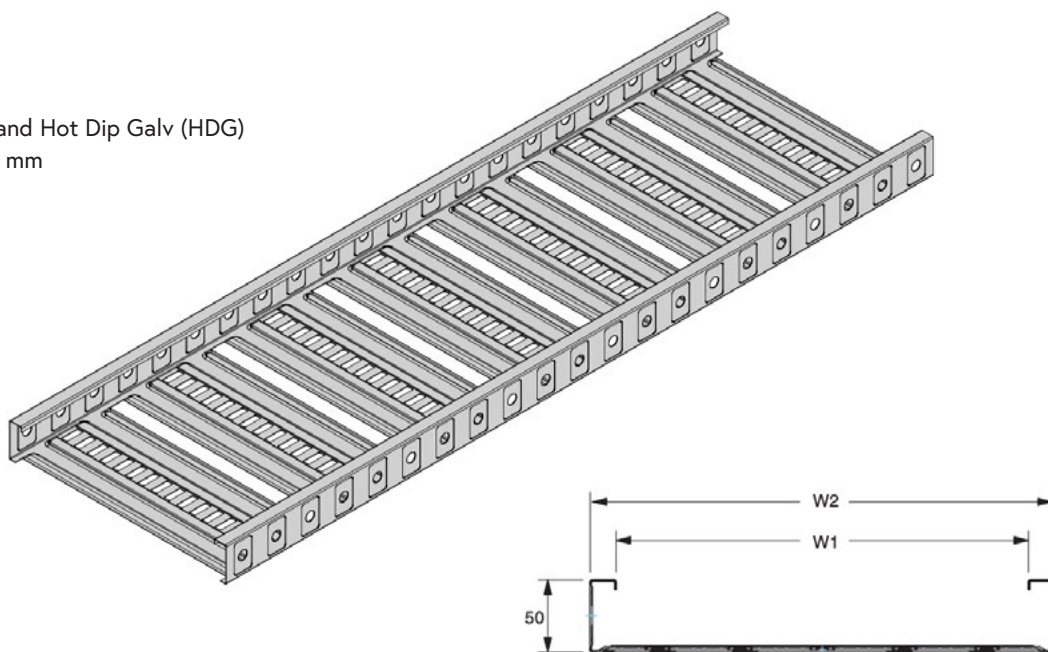


CT5 ACCESSORIES
Heavy Duty

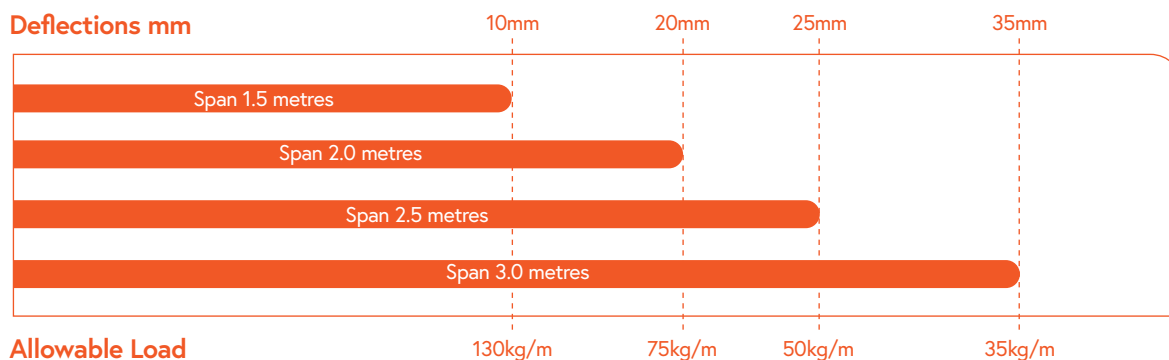
FDG CT3 Cable Tray

Heavy Duty

- **Safety Factor:** 1.5
- **Finish:** Pre-Galv (Z275) and Hot Dip Galv (HDG)
- **Material:** Thickness: 0.8 mm



CT3 Cable Tray - Heavy Duty							
Code	Cable Laying Width mm "W1"	Overall Width mm "W2"	Cable Laying Depth mm	Length mm	Overall Height mm	Weight Pre-Galv	Weight Hot Dip Galv
FDG-CT3150	150	172	45	3000	50	5.3 kg	5.7 kg
FDG-CT3300	300	322	45	3000	50	7.8 kg	8.1 kg
FDG-CT3450	450	472	45	3000	50	10.1 kg	10.6 kg
FDG-CT3600	600	622	45	3000	50	12.6 kg	13.1 kg

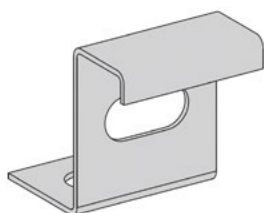


*FDG-CT3 has been tested in accordance with the NEMA requirements. The data displayed is based on physical test results of a 600 wide section and may vary for other widths. The Deflections have been provided as a guide based on continuous spans, and cannot be applied to end spans.

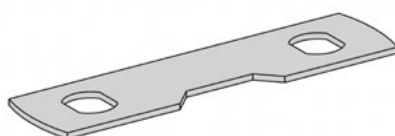
FDG CT3 Accessories

Heavy Duty

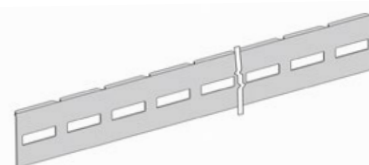
Side Hold Down Bracket



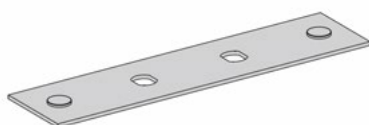
Riser Plate



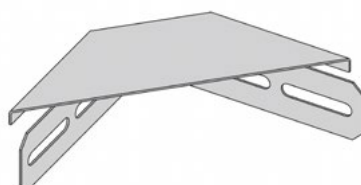
Radius Plate



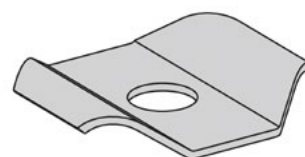
Splice Plate



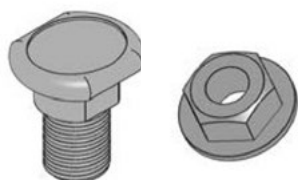
T Bracket



Centre Hold Down Clamp



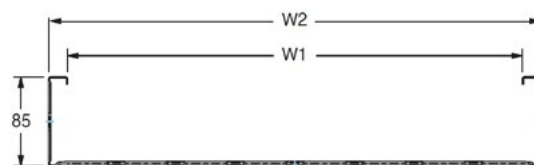
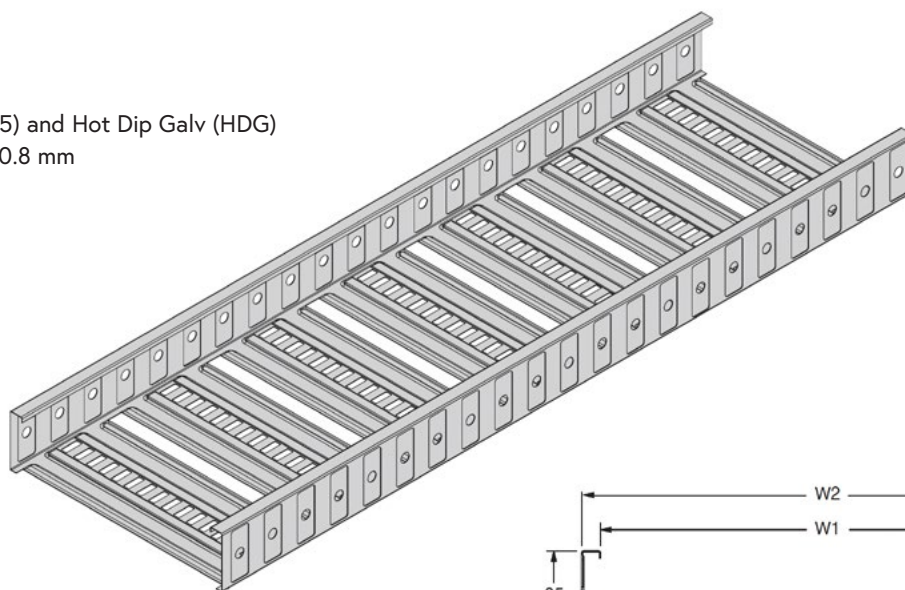
Splice Bolt and Nuts



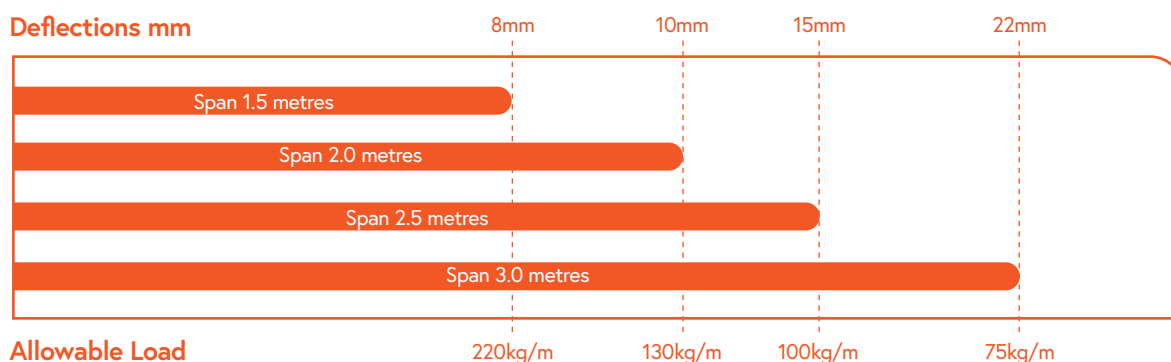
FDG CT5 Cable Tray

Heavy Duty

- **Safety Factor:** 1.5
- **Finish:** Pre-Galv (Z275) and Hot Dip Galv (HDG)
- **Material:** Thickness: 0.8 mm



CT5 Cable Tray - Heavy Duty							
Code	Cable Laying Width mm "W1"	Overall Width mm "W2"	Cable Laying Depth mm	Length mm	Overall Height mm	Weight Pre-Galv	Weight Hot Dip Galv
FDG-CT5150	150	172	80	3000	85	5.7 kg	5.9 kg
FDG-CT5300	300	322	80	3000	85	8.3 kg	8.7 kg
FDG-CT5450	450	472	80	3000	85	10.3 kg	10.8 kg
FDG-CT5600	600	622	80	3000	85	13.3 kg	14.0 kg

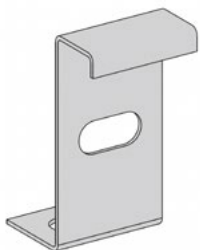


*FDG-CT5 has been tested in accordance with the NEMA requirements. The data displayed is based on physical test results of a 600 wide section and may vary for other widths. The Deflections have been provided as a guide based on continuous spans, and cannot be applied to end spans.

FDG CT5 Accessories

Heavy Duty

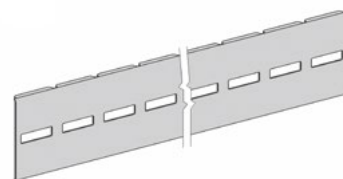
Side Hold Down Bracket



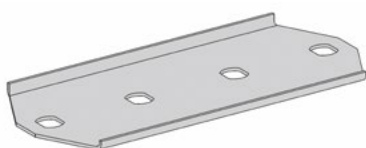
Riser Plate



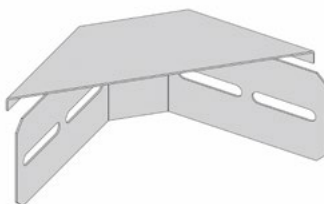
Radius Plate



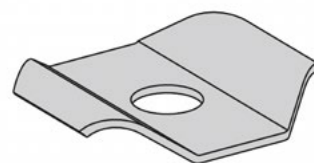
Splice Plate



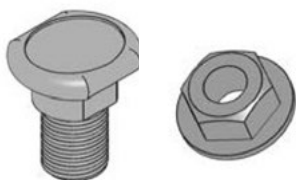
T Bracket



Centre Hold Down Clamp



Splice Bolt and Nuts



sales@fdgnz.com

20 Mansel Dr, Warkworth, Auckland 0910 New Zealand

09-275-6811